

**COLLECTION OF MATERIALS IN
BACTERIAL AND VIRAL
DISEASES
(Part II)**

HAEMORRHAGIC SEPTICAEMIA

From sick animals-Smears from blood and throat swelling.

From dead animals-Smears from heart blood & liver,heart blood in sterile containers,lymph nodes & spleen on ice.

BLACK QUARTER

Impression smears from affected muscle,exudate from lesions,pieces of affected muscles on ice.

ANTHRAX

Cattle and sheep-Flame fixed blood smears.

Horse, Swine & Dog-Smears from s/c swelling.

**In dead animals- Swabs of blood from ear vein
for cultural examination.**

Ear/muzzle piece on ice.

GLANDERS

Exudate from skin and lung lesions on ice.

Impression smears from exudate.

BRUCELLOSIS

Serum, semen uterine exudate on ice.

Heart blood and abomasal contents of aborted fetus, placenta with cotyledons.

Vaginal swabs in PBS on ice.

LEPTOSPIROSIS

Blood, serum, milk & urine in sterial vials on ice.

Pieces of liver and kidney in 10% formalin.

TUBERCULOSIS

Live animal-cough material, milk sample in sterile container.

Dead animals-tissue pieces from suspected lesion in 10% formalin, smears from lesions, lymph glands lung lesions in sterile containers in 50% buffered glycerine.

JOHNE'S DISEASE

Rectal pinch smears, bowl washings.

Dead animals-terminal portion of ileum with ileo-caecal valve, mesenteric lymph gland in 10% formalin.

ENTEROTOXAEMIA

Contents of small intestine with and without chloroform separately, kidney pieces, urine on ice.

ACTINOMYCOSIS & ACTINOBACILLOSIS

Smears from pus lesions, pus in vials on ice, formaline preserved materials from affected muscles.

BOVINE GENITAL CAMPHYLOBACTERIOSIS

In males-

Preputial washings/mucus/smegma/secretions smears.

In females-

Vaginal mucus/lavage, aborted fetus, placenta, stomach contents, lungs, liver etc.

SALMONELLOSIS

Intestinal swab, heart blood, bile, liver spleen in sterile containers on ice.

LISTERIOSIS

Aborted foetus, placenta, internal organs in sterile vials on ice & 10% formaline saline separately.

MYCOPLASMOSIS/CCPP/CBPP/CORYZA

Swabs from lesions, nose & vagina in PBS on ice, paired serum & lung pieces in 10% formaline & on ice separately.

CONTAGIOUS EQUINE METRITIS

Urogenital swabs from mare and stallion and paired serum samples.

COLLECTION OF MATERIALS IN VIRAL DISEASES

PPR

Eye, mouth and rectal swabs in PBS on ice, blood at the height of temp. in anticog., Pre-scapular lymph nodes, spleen, intestine on ice & lung, liver, spleen, tonsils etc. in 10% formaline.

FOOT & MOUTH DISEASE

Curetted epithelium from tongue & foot lesions in 50% PBS on ice. Pieces of heart & other organs in calves in 10% formal saline and ice separately.

MAD COW (Bovine Spongiform Encephalopathy)

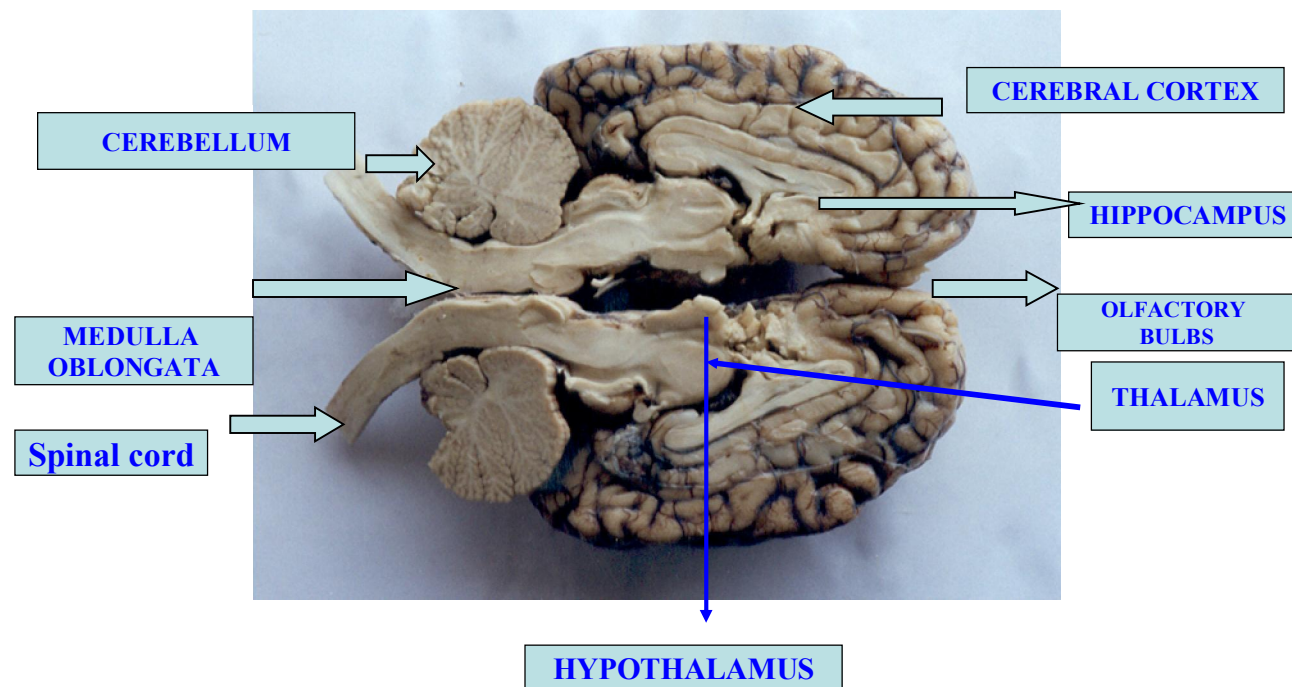
Tissue pieces from Medulla Oblongata and cerebellum in 10% formaline and on ice separately.

RABIES

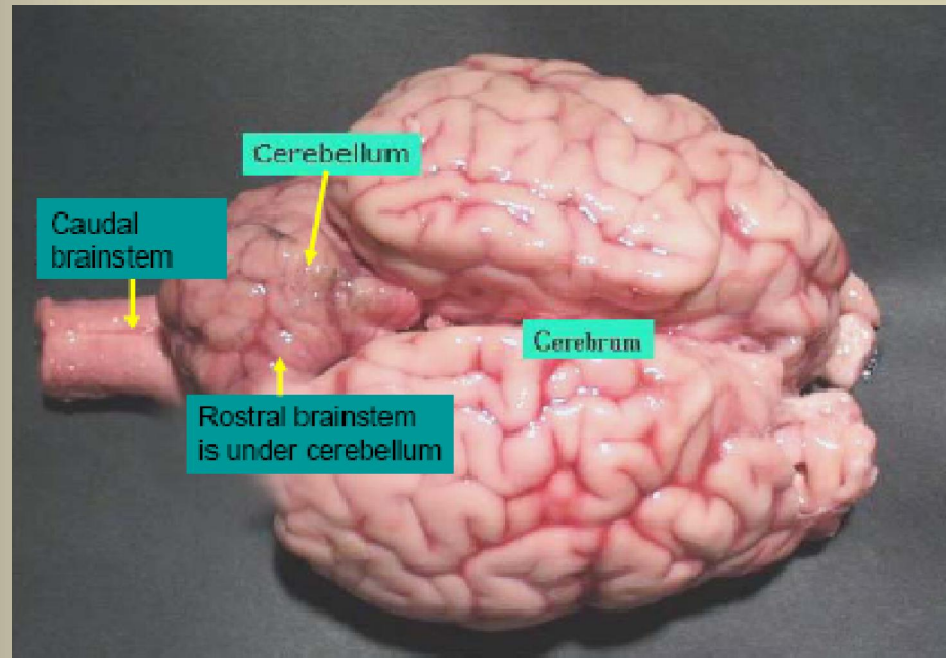
Half portion of brain , salivary glands in 50% PBGS and rest half in 10% formaline in leakproof hard box.



GROSS STRUCTURE OF BRAIN



Sample Collection and Preparation



Sample for Histopathology

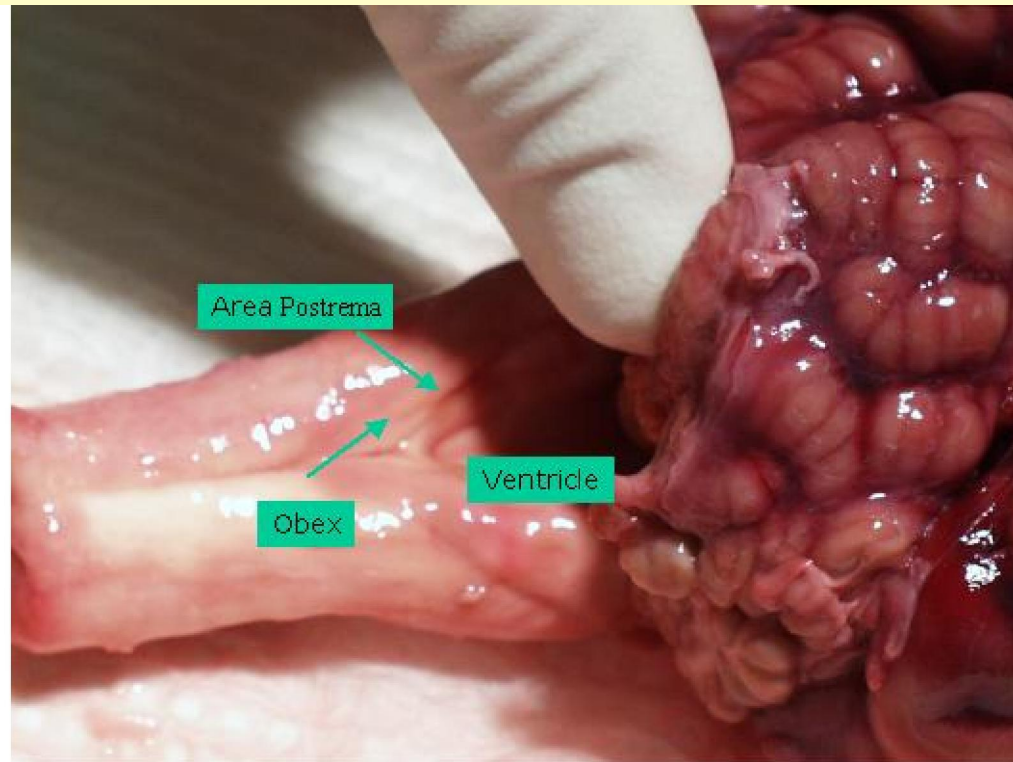
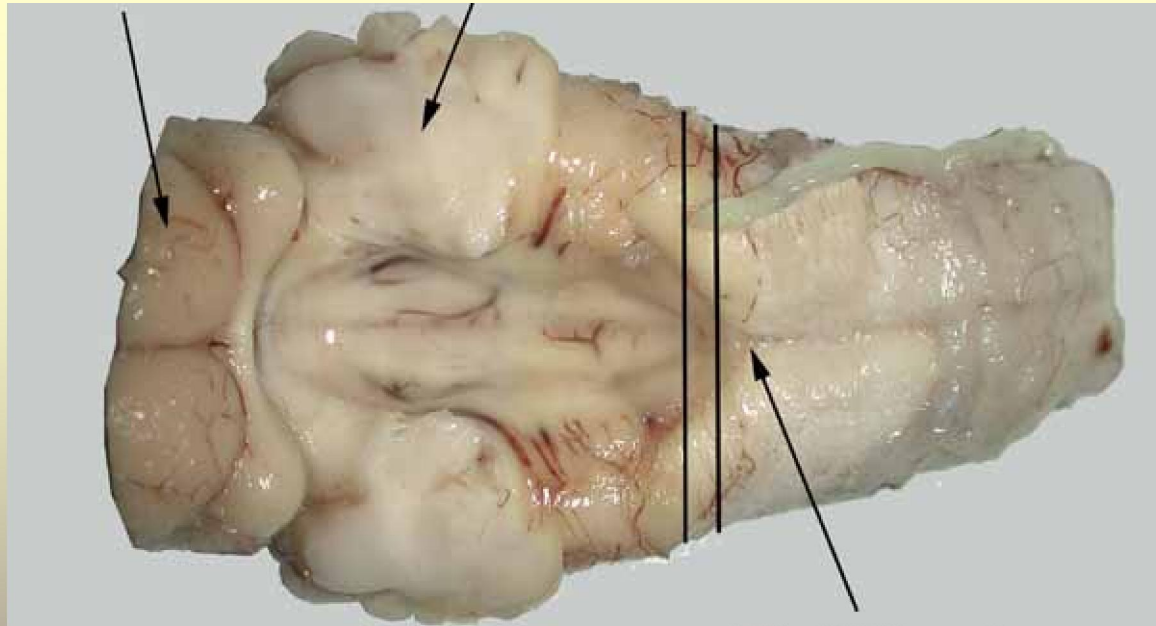


Figure 9. Dorsal view of medulla showing the obex, a tissue submitted for tests for bovine spongiform encephalopathy. The area shown is the fourth ventricle (under the cerebellum). The most caudal structure of the ventricle is the area postrema. The obex is immediately caudal to the area postrema.



Actual Photograph of Obex



Brainstem: the obex region

SWINE FEVER

Blood at the height of temp. 20 ml. with anticoagulant on ice from live animal.

Heart blood, pieces of spleen, l. node, pancreas in 50% PBGS.

Pieces of brain, lung, intestines (ileo-caecal junction) and kidneys in 10% formal saline.

BLUE TONGUE DISEASE

Blood at the height of temp.with anticoagulant,paired sera,spleen ,l.nodeson ice,spleen,l.nodes,intestine etc.in formaline.

CANINE DISTEMPER

Impression smears of visceral organs ,pieces of lung ,u.bladder,liver,trachea & brain in formaline.

AFRICAN HORSE SICKNESS

Whole blood & serum,spleen,brain and lung in 50% PBGS and formaline separately.

THANKS

