

Female Reproductive System

Dr. Nidhi Gupta

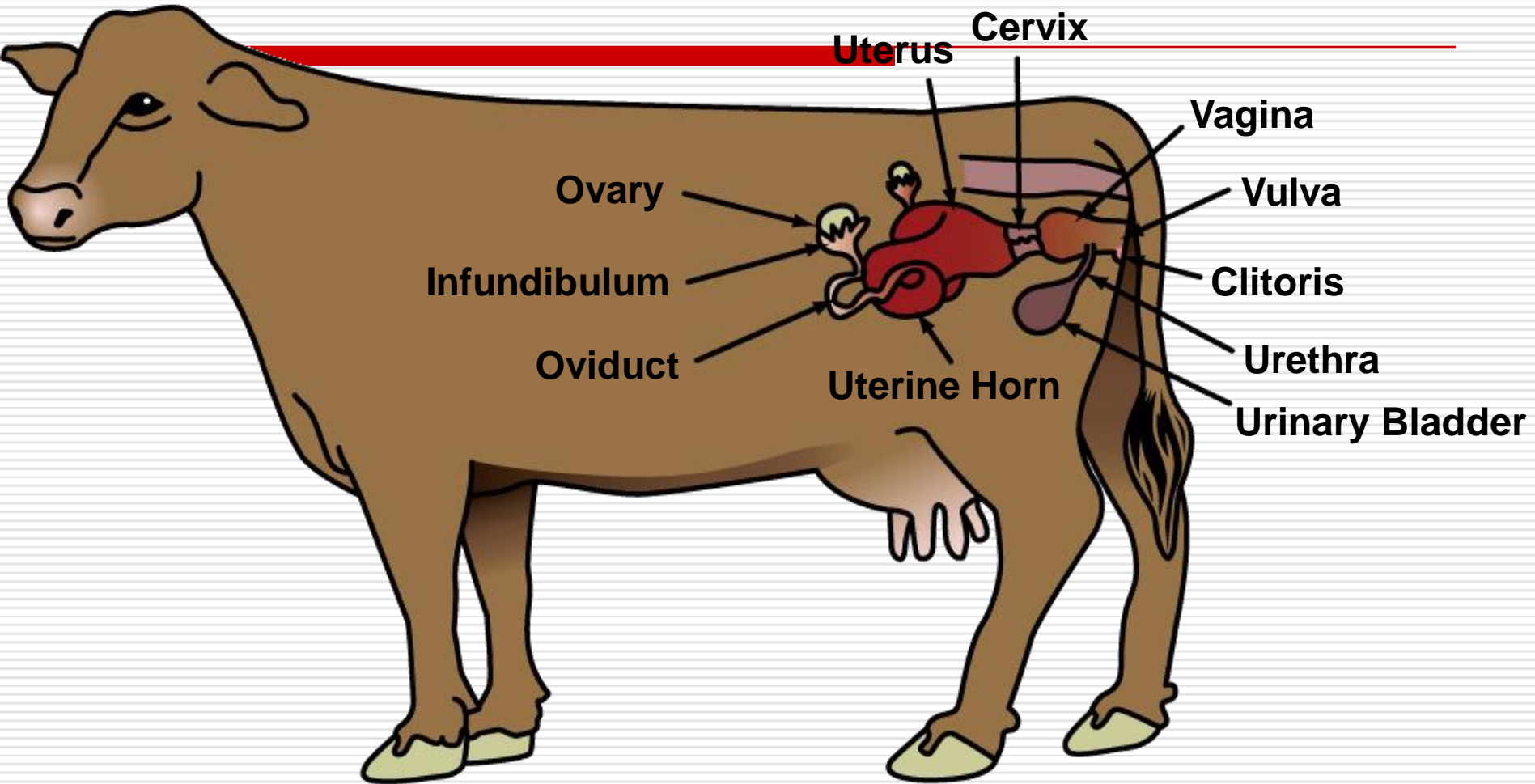
Assistant Professor

Department of Veterinary Anatomy

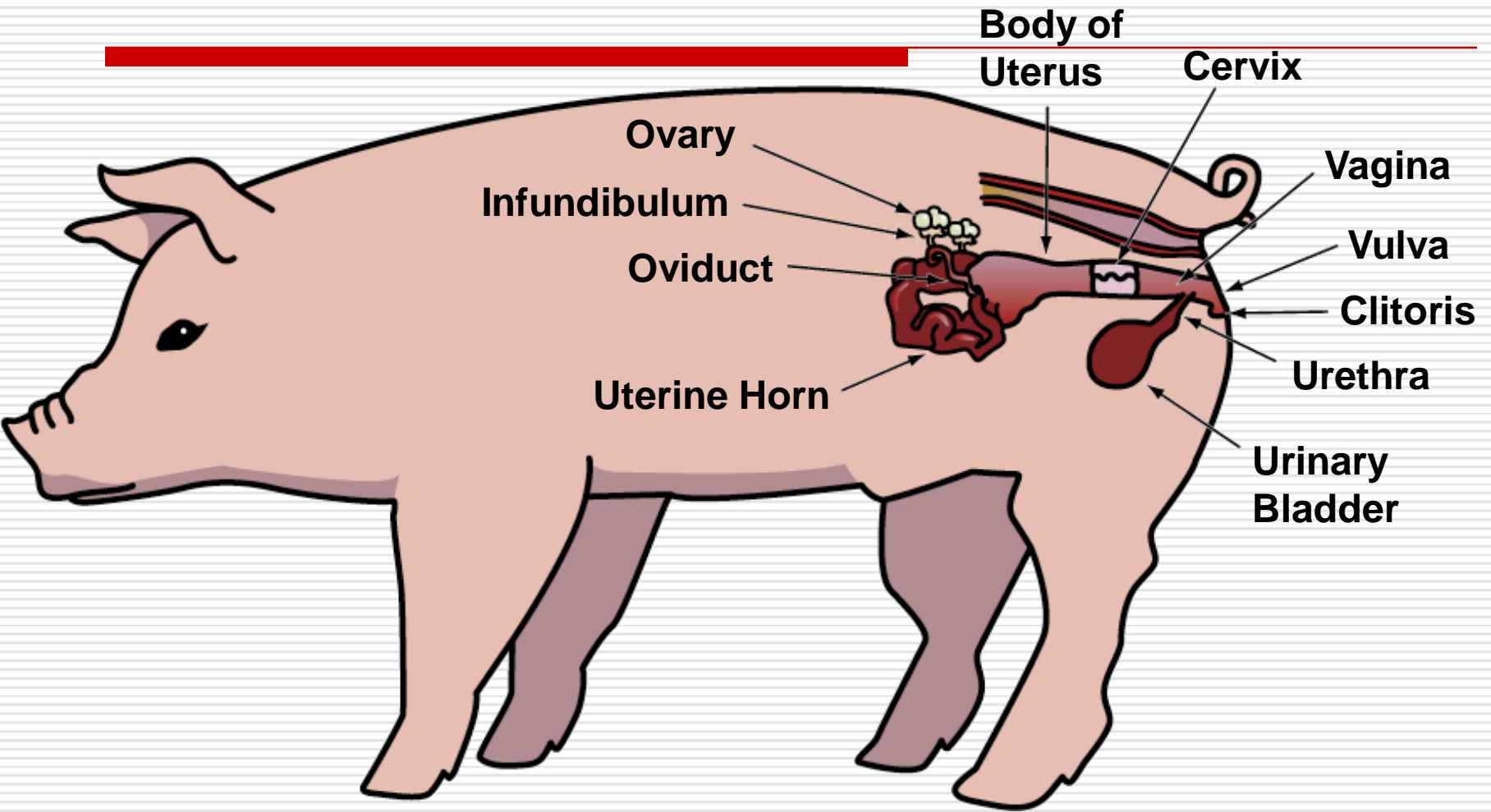
College of Vety. Sci. & A.H.

NDVSU, JABALPUR

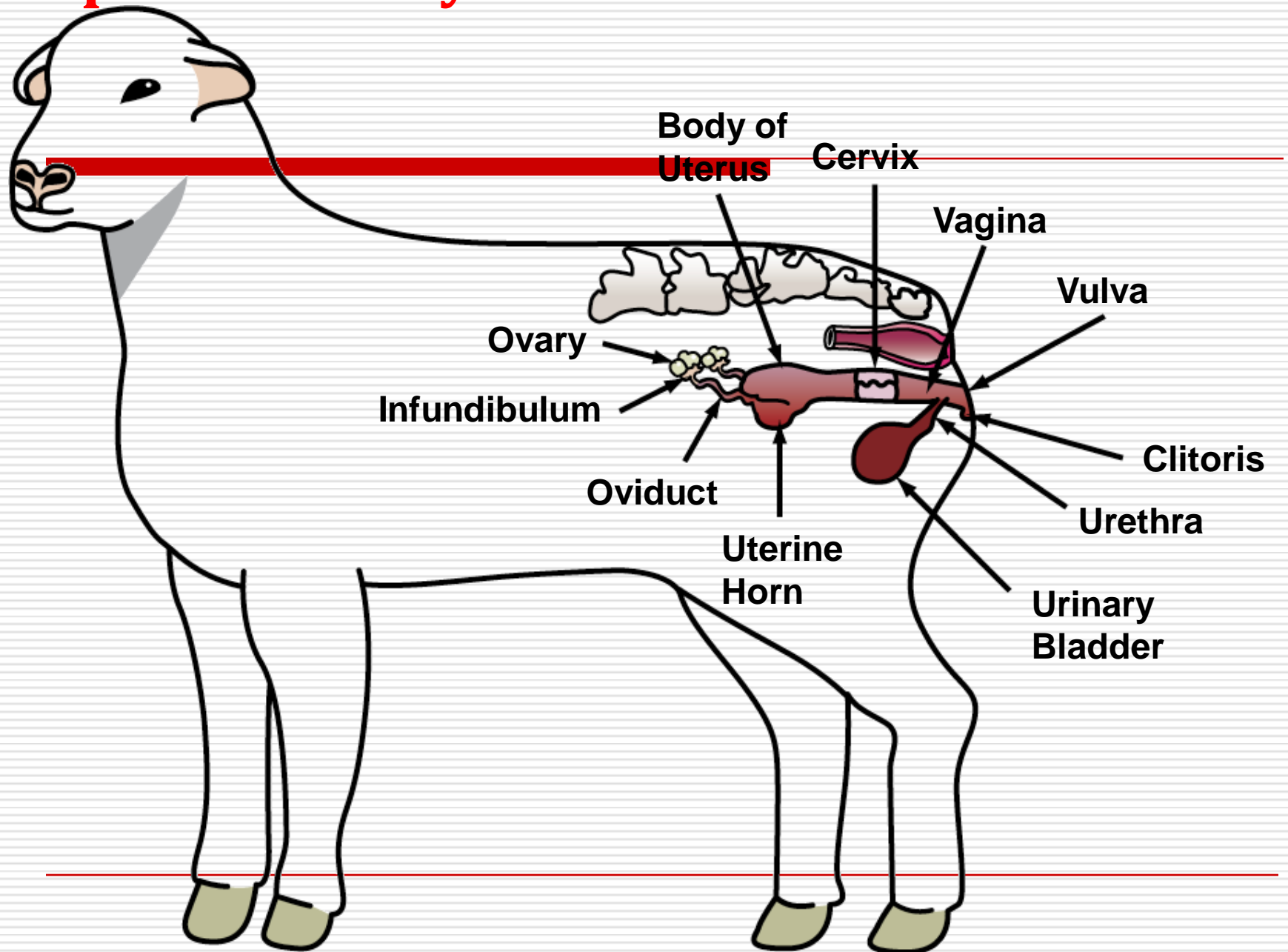
Reproductive System of the Cow - Side View



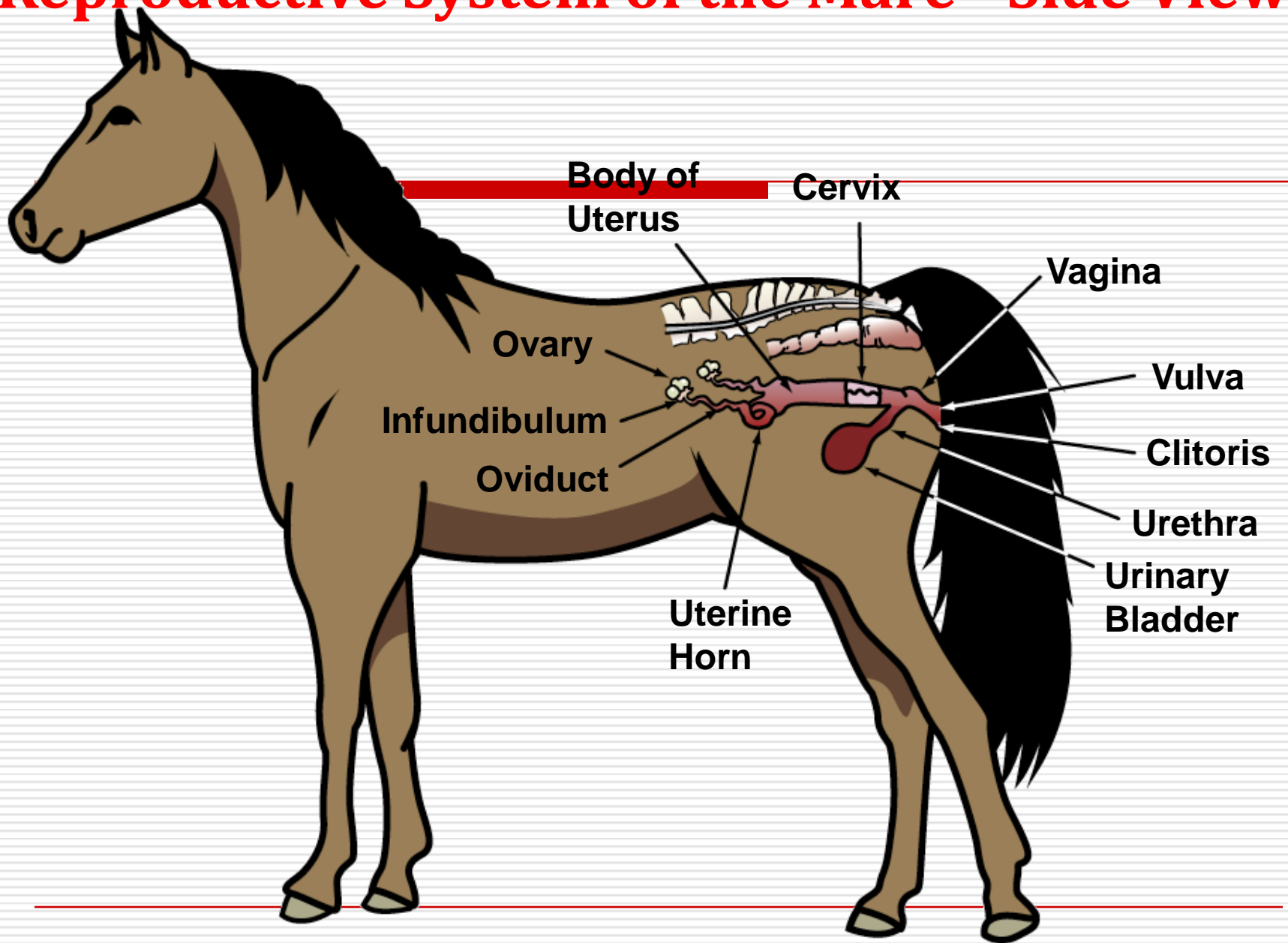
Reproductive System of the Sow - Side View



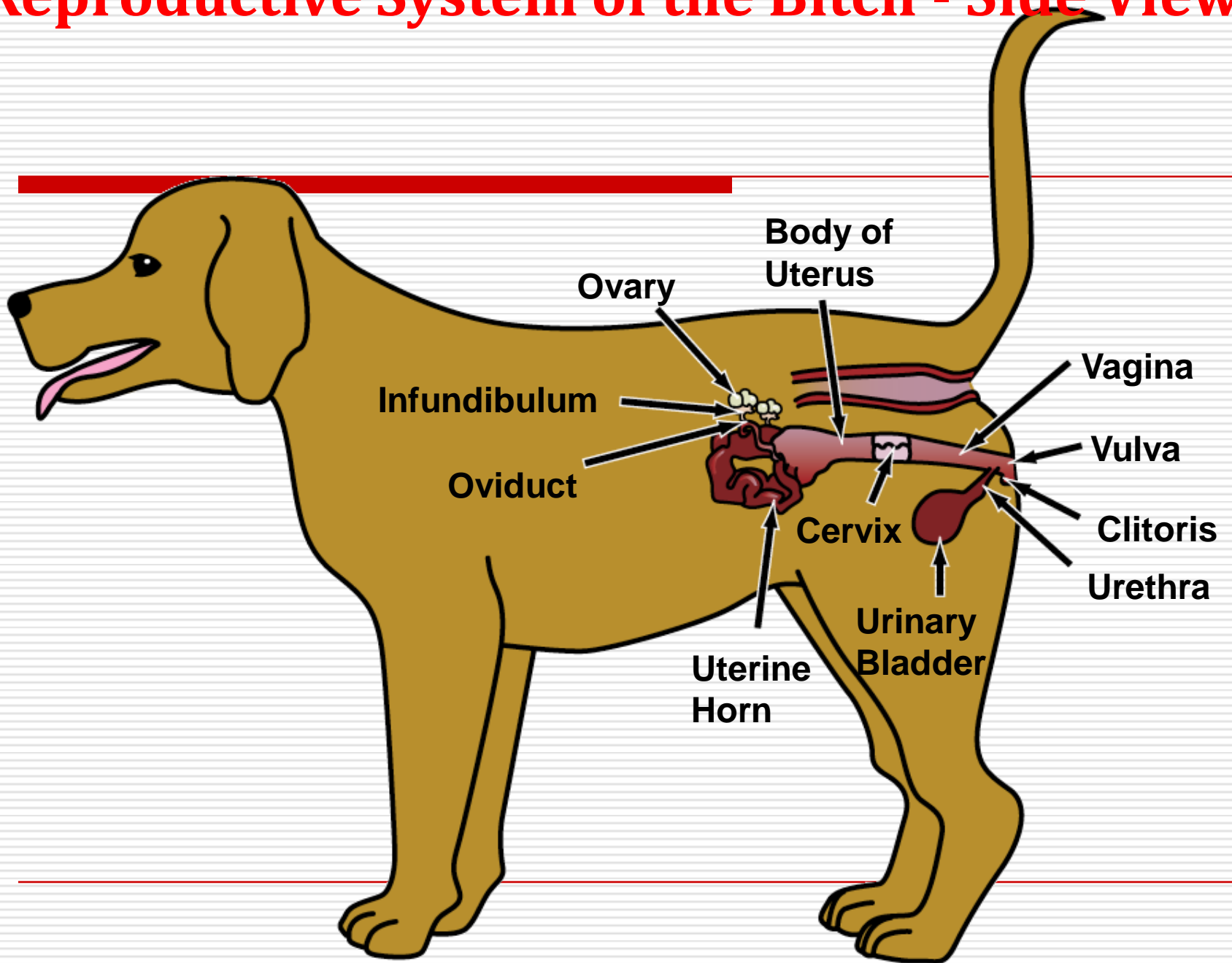
Reproductive System of the Ewe - Side View



Reproductive System of the Mare - Side View



Reproductive System of the Bitch - Side View



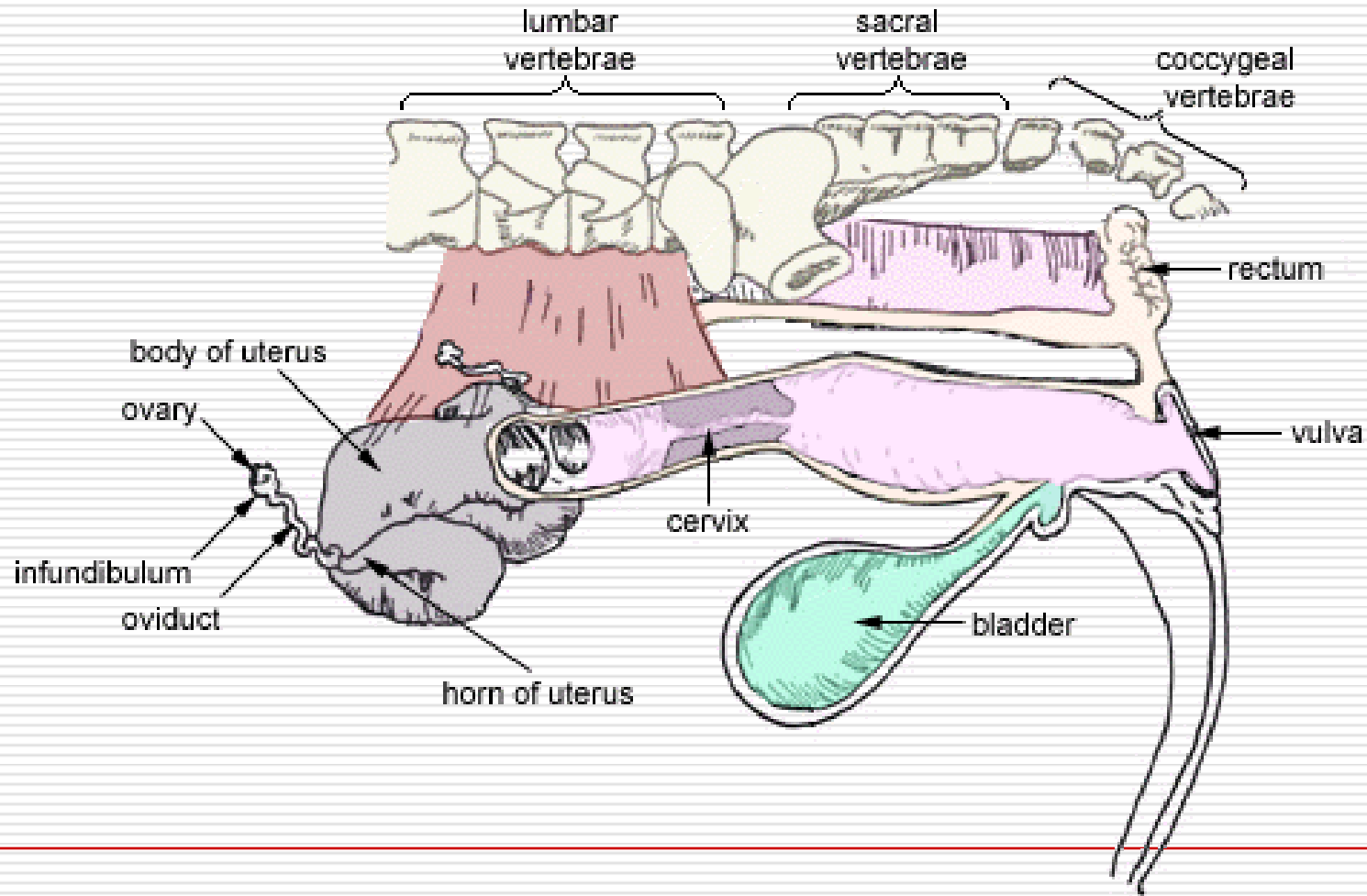
For the most part they have the same reproductive parts....

- Ovary – produces eggs & hormones**
 - Infundibulum – catches eggs after burst from ovary**
 - Oviduct (Fallopian Tube) – narrow passage for egg, site of fertilization**
 - Uterine Horn – For litter bearing animals to develop**
 - Uterus – development of fetus**
-

Female Reproductive Parts.... Cont....

- Cervix – muscle which locks down uterus**
 - Vagina – site of copulation (semen deposited) in most animals**
 - Clitoris – stimulates reproductive tract causing waves during mating**
 - Vulva – external opening of vagina**
 - Urethra – carries urine**
-

Cow's Reproductive Tract



Anatomy of Uterus

- It is a thick walled hollow muscular organ.
 - It is situated almost in the abdominal cavity & partly in the pelvic cavity between bladder below & the colon and rectum above.
 - It continuous cranially with the oviduct and caudally with the vagina .
 - The organ is attached to the sub-lumbar region and to the lateral wall of pelvic and abdominal cavity by the broad ligament .
 - The broad ligament is formed by double fold of peritoneum with some connective tissue and muscle fibers.
-

Horns of uterus

□ Uterus present 2 horns

1-Right horn

2-Left horn

□ Each horn is a spiral muscular tube tapered cranially to join the oviduct.

□ The length of uterine horn is about 35 to 40 cm.

□ The diameter of uterine horn is not uniform. it increased towards body.

Horns of uterus

cont.

- Anterior extremity of horn is tapering
 - Posteriorly it converge with the wall of opposite horn & covered by fibro muscular sheath & at this part the two horn share common peritoneum hence they appear shorter than their actual length.
 - Its inferior or lower curvature is concave.
 - Its superior curvature is convex.
 - The horn are directed forward, downward, outward, backward and finally upward.
 - They are spiral & resemble to the horn of Ram.
-

Body and cervix of uterus

- Body is very short & narrow. 4 to 5 cm (actual length) However it appear externally 10 to 15 cm.
- It appear longer than really, due to the presence of common peritoneal covering on the caudal most part of the horn before their union.
- This is dorsoventrally flat tube & is laterally attached with the broad ligament.
- The wall is thicker than horns.
- The body bifurcates cranially to form horn & caudally continuous with the cervix. It is last part of uterus.
- It is 8 cm long.

Body and cervix of uterus cont.

- **It is a short tube which has numerous folds in non pregnant animal.**
- **It continuous anteriorly with the body and posterioly it project in to the vagina.**
- **The tip of the projected part presents a depression, k/w as **external os** , through which the cervical canal communicate with the vagina.**

Note:

In pregnancy , caruncles size may be up to 10-12 cm long, 6 cm wide & they supply blood to foetus through placenta.

External Genitalia of the Cow



Anus

Labia

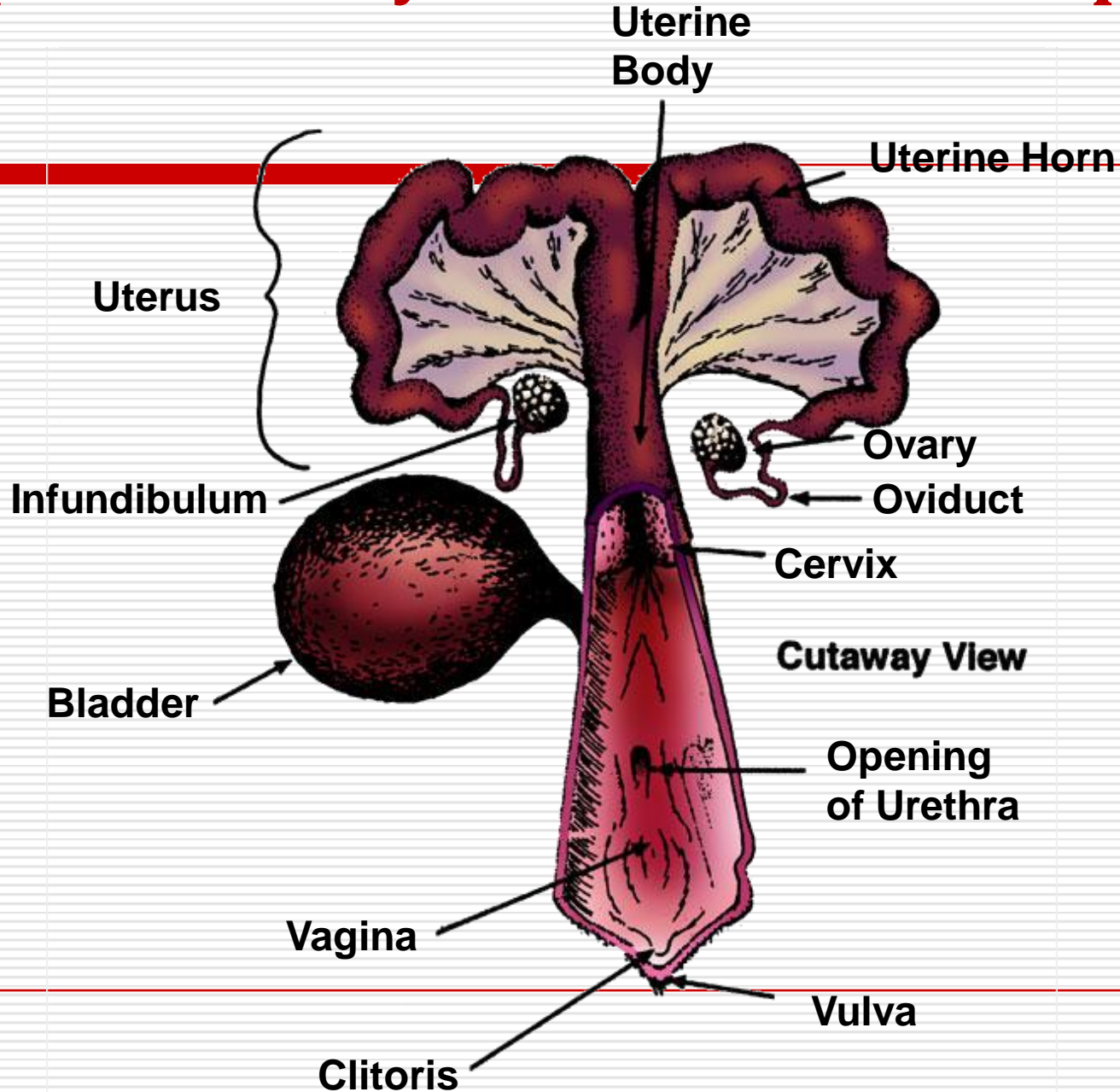
Clitoris

Labia

Vulva



Reproductive System of the Sow - Top View



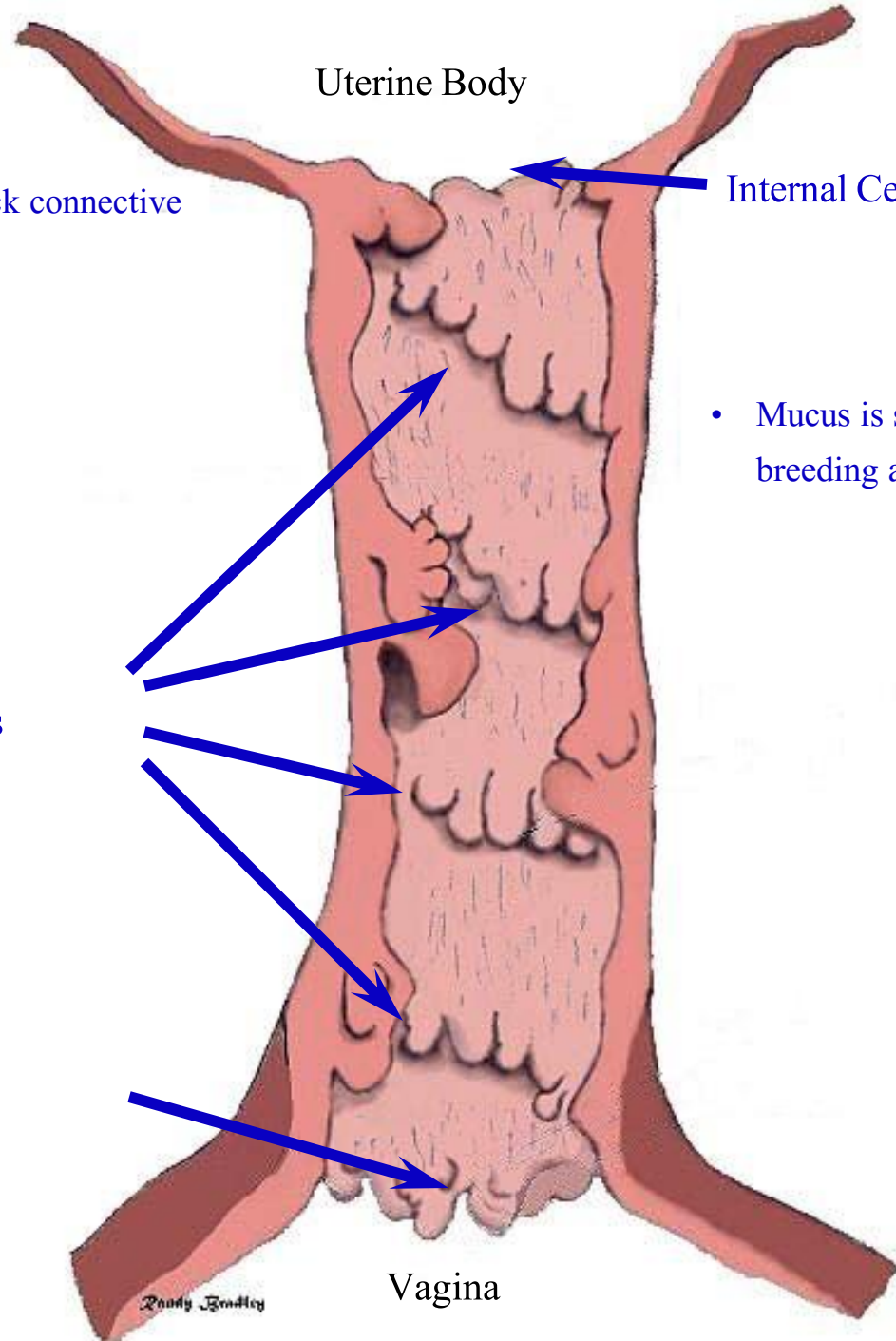
- Cervix is composed of thick connective tissue



Cervix

Cow has 4-5 annular rings

External Cervical Os



Internal Cervical Os

- Mucus is secreted near the time of breeding and ovulation.



Vagina

Randy Bradley

Mare

Uterine Body

No obstacles

Longitudinal Folds

Fornix Vagina

Vagina

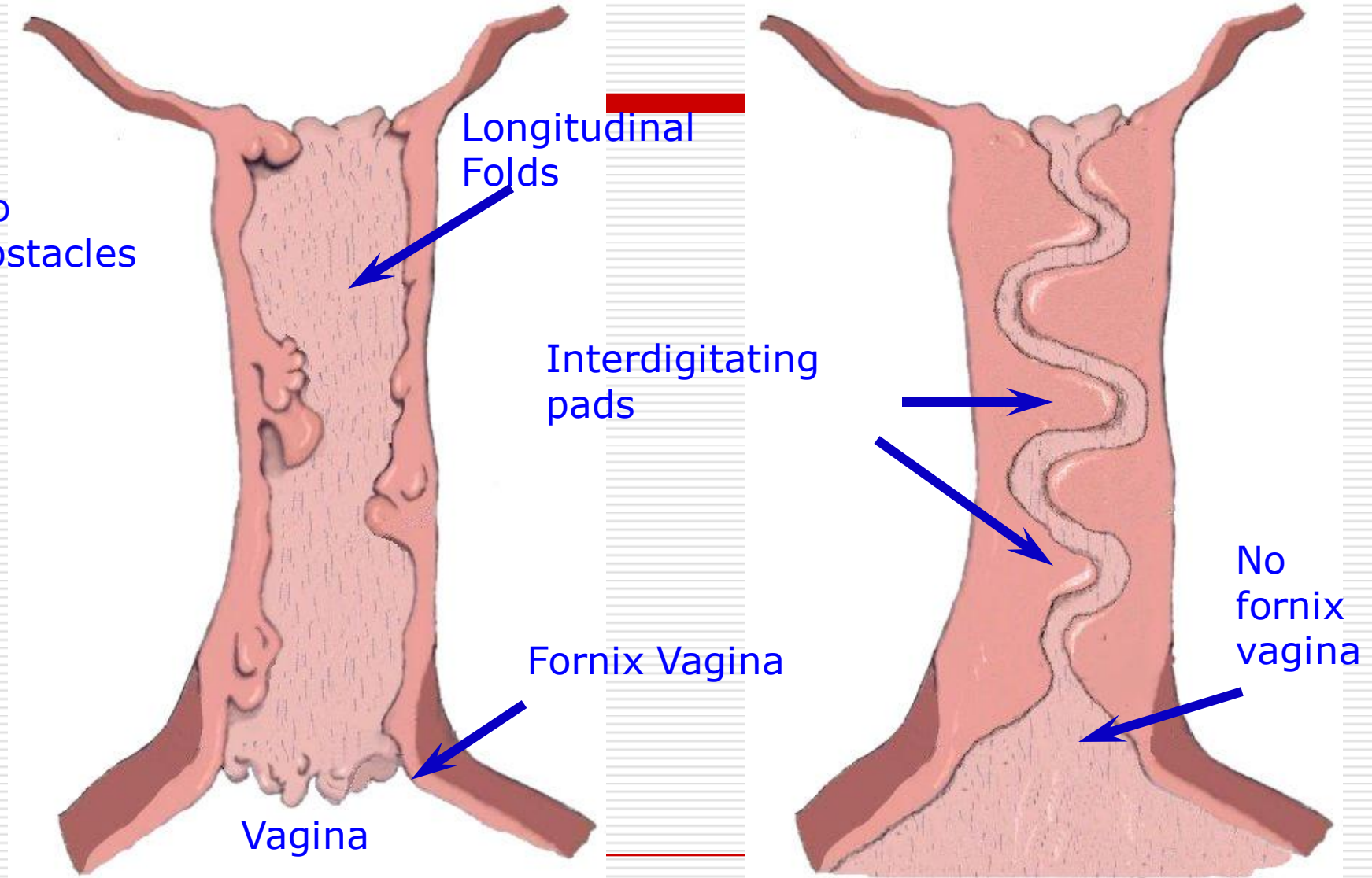
Sow

Uterine Body

Interdigitating pads

No fornix vagina

Vagina



Thanks
